

# Waterslides

By  **VORTEX**

## WATERSLIDES DESIGNS EXCEEDING STANDARDS



ASTM INTERNATIONAL

ASTM F2376 - 06  
Standard for  
Waterslide Design  
and Operation



International  
Building Code



World Waterpark  
Association (WWA)  
Guidelines

## WATERSLIDES FEATURES OVERVIEW



### canopy

Shadesure® fabric canopies offer 95% UV protection.



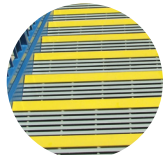
### spiral stairway

These space savers are offered as standard features at no extra charge.



### premium coating

Premium finish coat over hot-dip galvanized steel resists corrosion.



### AquaGRATE® decking

Standard on all stair and deck surfaces for improved comfort and safety for bare feet – a must in high traffic aquatic areas.



### wide stairways

Wide stairway! 55" (1.4m) offering 48" (1.2m) free and clear between ADA safety rails.



### built-in water chambers

Allows for smooth and continuous introduction of water into rider path.



### runouts

Pool-less runouts are a safe, high capacity alternative to plunge pools.



### built-in highwalls

One-piece 230° high-wall curves with no unsightly or dangerous bolt-ons or built-up sections.



### safety signage

Safety signage for all waterslides details proper procedures and sliding techniques for maximum safety and fun.



### lockable gates

On all waterslide towers and stairs to restrict access when waterslide is not in use.



### safety entry

Sit down bars on each waterslide ensure safe entry and sliding.



### high grade gelcoats

High-grade gelcoats for a smooth, low-maintenance finish inside and out.



World leader in aquatic play solutions

VORTEX-INTL.COM | INFO@VORTEX-INTL.COM  
1.877.586.7839 (USA/CANADA)



# PrecisionRide™ series

By  **VORTEX**

Engineered for performance and manufactured with state-of-the-art technology, Vortex's new **PrecisionRide™ series** offers the ultimate waterslide experience with unmatched smooth, comfortable rides.



## superior appearance

- Superior glossy finish inside and out
- Consistent thickness
- Smooth, frictionless connections for an enhanced riding experience



## high strength - light weight

- PrecisionRide™ series flumes have the highest strength-to-weight ratios in structures today



## durability & performance

- Long life, low maintenance
- Corrosion resistant
- Thermal & electrical insulation properties



## maximum design flexibility

- Ride paths can be designed to accommodate your unique space and facility requirements



World leader in aquatic play solutions

[VORTEX-INTL.COM](http://VORTEX-INTL.COM) | [INFO@VORTEX-INTL.COM](mailto:INFO@VORTEX-INTL.COM)  
1.877.586.7839 (USA/CANADA)