



**LANCO**

LANCO North America Corp. 101 N. Tryon St., Suite 600 Charlotte, NC, 28246  
 Telefon: +1 (704) 998 5670  
 Email: info@lanco-usa.com  
 Internet: www.lanco-usa.com



**LANCO**

**SHELTER SOLUTIONS  
FOR ALL CLIMATES**



**07 // THETA HALF-BARREL RIGID FRAME SHELTERS  
TECHNICAL DATA**

**AREAS OF APPLICATION**



	T 5-400	T 5-600	T 5-800	T 6-400	T 6-600	T 6-800
<b>Base area</b>	215.30 ft <sup>2</sup>	322.90 ft <sup>2</sup>	430.60 ft <sup>2</sup>	387.50 ft <sup>2</sup>	516.70 ft <sup>2</sup>	645.80 ft <sup>2</sup>
<b>Width</b>	16.40 ft	16.40 ft	16.40 ft	19.70 ft	19.70 ft	19.70 ft
<b>Lenght</b>	13.10 ft	19.70 ft	26.20 ft	19.70 ft	26.20 ft	32.80 ft
<b>Height</b>	8.20 ft	8.20 ft	8.20 ft	9.80 ft	9.80 ft	9.80 ft

**08 // ARZ DECONTAMINATION SHOWERS  
TECHNICAL DATA**

**AREAS OF APPLICATION**



	ARZ 6X6	ARZ 6X6 T	ARZ 6X10	ARZ 6X10 T	ARZ 10X15
<b>Width</b>	6.60 ft	6.60 ft	6.60 ft	6.60 ft	9.80 ft
<b>Lenght</b>	6.60 ft	12.50 ft	9.80 ft	15.70 ft	14.80 ft
<b>Height</b>	8.20 ft	8.20 ft	8.20 ft	8.20 ft	8.50 ft
<b>Weight</b>	97.00 lb	134.00 lb	165.00 lb	195.00 lb	298.00 lb

# 01 // ARZ LITE DUTY INFLATABLE SHELTERS TECHNICAL DATA

## AREAS OF APPLICATION



	ARZ 50	ARZ 100	ARZ 200	ARZ 250	ARZ 350	ARZ 450	ARZ 550	ARZ 650
<b>Base area</b>	53.80 ft <sup>2</sup>	107.60 ft <sup>2</sup>	215.30 ft <sup>2</sup>	226.00 ft <sup>2</sup>	333.70 ft <sup>2</sup>	441.30 ft <sup>2</sup>	549.00 ft <sup>2</sup>	656.60 ft <sup>2</sup>
<b>Width</b>	11.20 ft	10.50 ft	13.10 ft	18.00 ft	18.00 ft	18.00 ft	18.00 ft	18.00 ft
<b>Lenght</b>	5.70 ft	11.20 ft	16.40 ft	12.80 ft	18.80 ft	24.60 ft	30.80 ft	36.80 ft
<b>Eaves height</b>	7.60 ft	7.60 ft	6.60 ft	6.60 ft	6.60 ft	6.60 ft	6.60 ft	6.60 ft
<b>Ridge height</b>	9.00 ft	9.20 ft	9.20 ft	9.70 ft	9.70 ft	9.70 ft	9.70 ft	9.70 ft

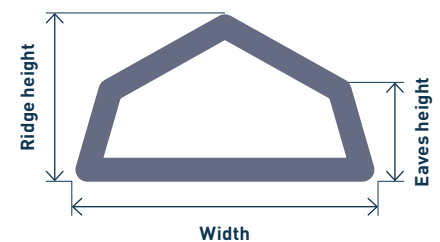
# 02 // AZM MEDIUM DUTY INFLATABLE SHELTERS TECHNICAL DATA

## AREAS OF APPLICATION



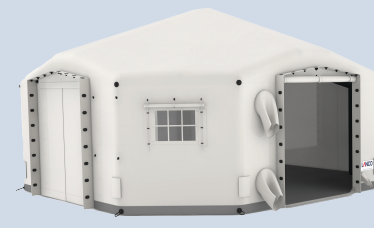
	AZM 8-4 SR	AZM 11-6 SR
<b>Base area</b>	1116.80 ft <sup>2</sup>	2675.90 ft <sup>2</sup>
<b>Width</b>	27.20 ft	36.70 ft
<b>Lenght</b>	41.00 ft	72.80 ft
<b>Eaves height</b>	10.40 ft	14.30 ft
<b>Ridge height</b>	13.60 ft	19.70 ft

### Description of the dimensions



# 03 // AZF MEDIUM DUTY INFLATABLE SHELTERS TECHNICAL DATA

## AREAS OF APPLICATION



	AZF 350	AZF 500	AZF 700	AZF HUB
<b>Base area</b>	355.00 ft <sup>2</sup>	517.00 ft <sup>2</sup>	678.00 ft <sup>2</sup>	355.00 ft <sup>2</sup>
<b>Width</b>	20.70 ft	20.70 ft	20.70 ft	19.70 ft
<b>Lenght</b>	16.90 ft	24.80 ft	32.60 ft	19.70 ft
<b>Eaves height</b>	7.90 ft	7.90 ft	7.90 ft	7.00 ft
<b>Ridge height</b>	10.30 ft	10.30 ft	10.30 ft	11.20 ft

# 04 // RAPID HIGH PRESSURE INFLATABLE SHELTERS TECHNICAL DATA

## AREAS OF APPLICATION



	RAPID 6-400	RAPID 6-500	RAPID 6-600
<b>Base area</b>	387.50 ft <sup>2</sup>	516.70 ft <sup>2</sup>	645.80 ft <sup>2</sup>
<b>Width</b>	19.70 ft	19.70 ft	19.70 ft
<b>Lenght</b>	19.70 ft	26.30 ft	32.80 ft
<b>Central height</b>	9.80 ft	9.80 ft	9.80 ft



- Can be set-up quickly by 1-3 persons
- All tents are interconnectable
- Ideal solution for all emergency situations
- PVC-coated fabric, flame and UV resistant
- High tear resistance & tensile strength

# 05 // INX HYBRID SHELTERS TECHNICAL DATA

## AREAS OF APPLICATION



	INX 300	INX 450	INX 600
<b>Base area</b>	322.90 ft <sup>2</sup>	484.40 ft <sup>2</sup>	635.00 ft <sup>2</sup>
<b>Width</b>	19.50 ft	19.50 ft	19.50 ft
<b>Lenght</b>	16.90 ft	24.80 ft	32.60 ft
<b>Eaves height</b>	7.40 ft	7.40 ft	7.40 ft
<b>Ridge height</b>	9.20 ft	9.20 ft	9.20 ft



# 06 // RDT EXOSKELETON SHELTERS TECHNICAL DATA

## AREAS OF APPLICATION



	RDT 200	RDT 400	RDT 600	RDT S 200	RDT S 400	RDT S 600	RDT S 750
<b>Base area</b>	193.80 ft <sup>2</sup>	378.50 ft <sup>2</sup>	581.30 ft <sup>2</sup>	181.00 ft <sup>2</sup>	362.10 ft <sup>2</sup>	543.20 ft <sup>2</sup>	724.20 ft <sup>2</sup>
<b>Width</b>	19.00 ft	19.00 ft	19.00 ft	19.00 ft	19.00 ft	19.00 ft	19.00 ft
<b>Lenght</b>	9.80 ft	19.70 ft	29.50 ft	9.50 ft	19.00 ft	28.50 ft	38.00 ft
<b>Eaves height</b>	6.70 ft	6.70 ft	6.70 ft	7.00 ft	7.00 ft	7.00 ft	7.00 ft
<b>Ridge height</b>	9.00 ft	9.80 ft	9.80 ft	10.30 ft	10.30 ft	10.30 ft	10.30 ft